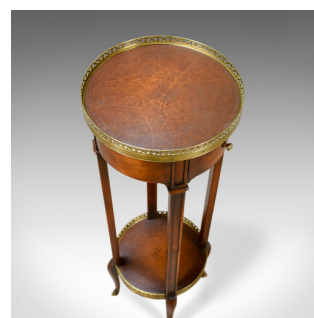
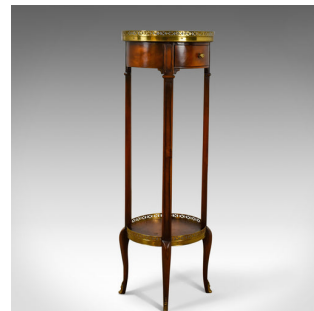


French Plant Stand in the 19th Century Taste, Mahogany Brass Ormolu Late C20th



DESCRIPTION

Our Stock # 18.5015

This is a French plant stand in the 19th century taste, mahogany, brass and ormolu dating to the late 20th century.

- Of quality craftsmanship in a deep, rich mahogany
- Slender, elegant panelled risers united by a lower tier
- Over cabriole legs terminating in cast, ormolu embellished feet
- Benefiting from a frieze drawer, dressed with brass pull
- The display tiers feature inset, blind embossed leather
- Galleried with pierced brass upstands

A good interpretation with solid joints and construction. Delivered waxed, polished and ready for the home.

Search [London Fine for #18.5015](#) , or scan the QR code for more photos and details

DIMENSIONS

Max Width: 38.25cm (15")

Max Depth: 38.25cm (15")

Max Height: 103.5cm (40.75")

Internal Top Diameter: 34cm (13.5")

