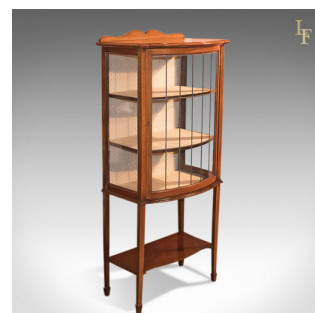




Antique Glazed Display Cabinet, Edwardian c.1910



DESCRIPTION

Our Stock # LFA-1514 This is a superior quality, antique glazed display cabinet dating to the Edwardian period c.1910. • Attractive honey tones to the first class mahogany • Desirable colour and grain interest • Inlaid with boxwood stringing to legs and cabinet • Raised on tapering square section legs terminating in spade feet • Lower display tier unites legs for added stability • Bow fronted cabinet door with faceted leaded glass • Original glazing to front and side panels • Working lock and key • Twin bow fronted shelves with mahogany faces • Charming, raised pattern, highest quality silk cotton finish • Bow fronted top with moulded edge detail • Serpentine up-stand to finish • Good proportions and a useful size A super cabinet in very good, antique condition. Solid joints and construction, delivered waxed, polished and ready for the home.

Search [London Fine for #LFA-1514](#) or scan the QR code for more photos and details

DIMENSIONS

Max Width: 66cm (26")
Max Depth: 42.5cm (16.75")
Max Height: 148.5cm (58.5")

