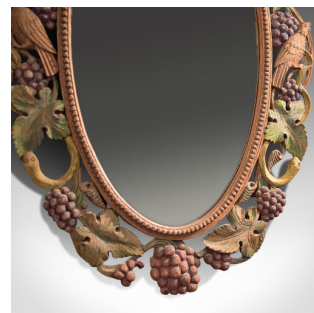
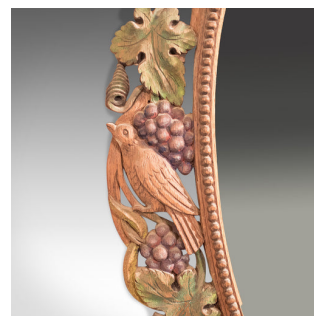
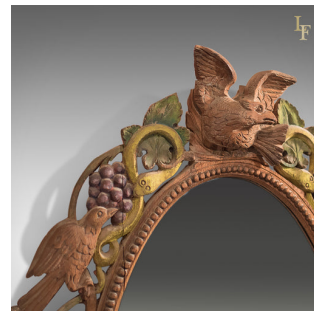


## Early to mid 20th Century Carved Wall Mirror, Anglo Indian



## DESCRIPTION

Our Stock # 10.1498

This is a decorative wall mirror with Anglo English interest dating to the early 20th century.

- Mirror plate in beaded oval mount
- Framed in pierced carving
- Fruiting vines
- Birds feeding
- Vine snakes (probably green vine snake - *Ahaetulla nasuta*)
- Surmounted by bird taking flight

A charming mirror with much interest, delivered ready to hang.

Search [London Fine for #10.1498](#) , or scan the QR code for more photos and details

## DIMENSIONS

Max Width: 61cm (24")  
Max Depth: 11cm (4.25")  
Max Height: 99cm (39")

