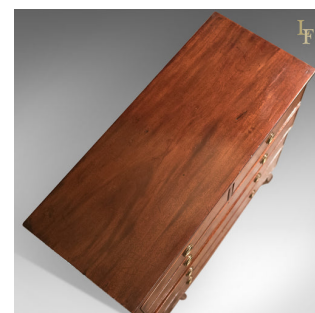




## Antique Chest of Drawers, After Sheraton Georgian c.1795



### DESCRIPTION

Our Stock # LFA-1566

This is a fine example of an English antique chest of drawers in the manner of Sheraton from the late Georgian era circa 1795.

- In quality mahogany with attractive grain and good colour
- Useful shallow proportions arranged in a classic '2 over 3' configuration
- Raised on typical splayed, slender bracket feet with swagged apron
- Cock beaded drawers solidly constructed with dovetailed joints
- Inset brass keyhole linings fronting brass locks, untested as key absent
- Dressed with ring drop handles over pressed brass back plates

Charming and useful, ideal in many locations due to its shallow depth. Solid joints and construction, delivered waxed, polished and ready for the home.

Search [London Fine](#) for #LFA-1566 or scan the QR code for more photos and details

### DIMENSIONS

Max Width: 105cm (41.25")

Max Depth: 45cm (17.75")

Max Height: 106cm (41.75")

