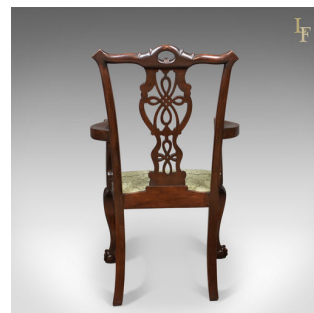
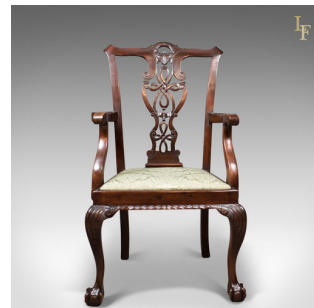


Antique Carver Chair, Victorian Chippendale Revival, c.1890



DESCRIPTION

Our Stock # 12.1608

This is an antique carver chair, a Victorian Chippendale revival piece dating to the end of the 19th century, c.1890.

- Beautifully crafted in heavy, dark mahogany
- Good colour, attractive grain detail and an aged patina
- Raised on stout cabriole front legs with carved knees
- Beautifully carved talon and ball feet
- Swept, square section rear legs
- Flared stiles sweep out to classic Chippendale ears
- Shaped, carved crest rail featuring butler grasp
- Well executed pierced ribbon back splat
- Seat rail decorated with roped carving detail
- Drop in seat panel traditionally stuffed
- Pale green damask cloth showing light wear associated with careful use

Search [London Fine for #12.1608](#) , or scan the QR code for more photos and details

DIMENSIONS

Max Width: 62cm (24.5")
Max Depth: 53.5cm (21")
Max Height: 104cm (41")
Seat Width: 48.25cm (19")
Seat Depth: 43cm (17")
Seat Height: 48.25cm (19")

