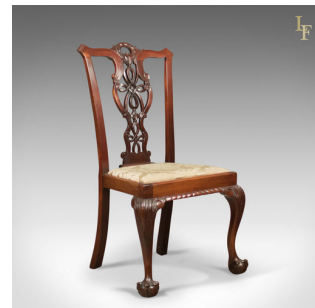


## Set of 4 Antique Dining Chairs, Victorian Chippendale Revival, c.1890



### DESCRIPTION

Our Stock # LFA-1587 This is a set of 4 antique dining chairs, Victorian Chippendale revival dating to the end of the 19th century, c.1890. • Beautifully crafted in heavy, dark mahogany • Good colour, attractive grain detail and an aged patina • Raised on stout cabriole front legs with carved knees • Beautifully carved talon and ball feet • Swept, square section rear legs • Flared stiles sweep out to classic Chippendale ears • Shaped, carved crest rail featuring butler grasp • Well executed pierced ribbon back splat • Seat rail decorated with roped carving detail • Drop in seat panel traditionally stuffed • Pale damask textile in serviceable condition with marks & signs of use - see images A super set of dining chairs easily re-upholstered to suit any dcor. Solid joints and construction, delivered waxed, polished and ready for the home.

Search [London Fine for #LFA-1587](#) or scan the QR code for more photos and details

### DIMENSIONS

Max Width: 55cm (21.75")  
 Max Depth: 51cm (20")  
 Max Height: 102cm (40.25")  
 Seat Width: 46cm (18")  
 Seat Depth: 36cm (14.25")  
 Seat Height: 48cm (19")

