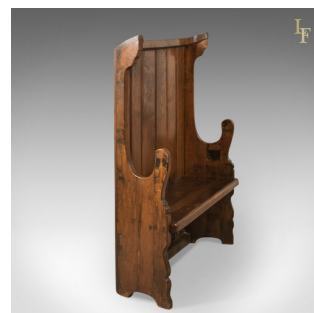


## Antique Settle, Victorian Tavern Bench, c.1850



## DESCRIPTION

Our Stock # LFA-1557 This is an antique settle, a Victorian tavern bench dating to c.1850 with earlier origins. • Robust and solid in generous stocks of English oak • Attractive waxed finish highlighting good colour and grain interest • Victorian 17th Century revival piece • Raised on bracketed stiles rising into shaped arm rests • Six plank finished back descending to floor with adze-hewn reverse • Partial hooded detail with upper brackets An appealing bench ideal as a hall perch, full of character. Solid joints and construction, delivered waxed, polished and ready for the home.

Search [London Fine for #LFA-1557](#) or scan the QR code for more photos and details

## DIMENSIONS

Max Width: 108cm (42.5")  
Max Depth: 41cm (16.25")  
Max Height: 140cm (55") Seat Width: 99cm (39")  
Seat Depth: 35.5cm (14")  
Seat Height: 46cm (18")

