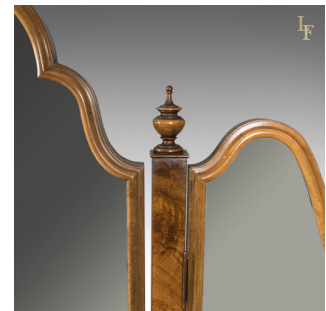
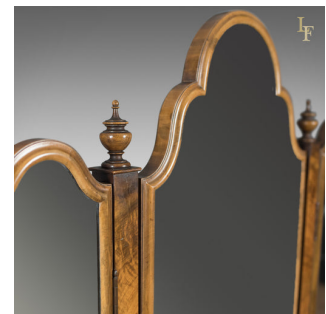


Walnut Dressing Table in the Queen Anne Taste, Bartholomew & Fletcher c.1915



DESCRIPTION

Our Stock # 12.1633

This is a superior quality walnut dressing table in the Queen Anne taste by one of London's finest historic furnishers Bartholomew & Fletcher.

- Finished in attractive burr walnut with caramel tones and an aged patina
- The top quarter, butterfly veneered with feather banding inlay border
- Raised on squat cabriole legs all round and a shaped apron to the front
- Tall, triple bevelled mirror arrangement with shaped tops and light foxing
- Outer mirrors hinge inwards with centre mirror tilt
- Hanging in robust walnut posts topped with turned finials
- '3 over 2' drawer arrangement, cock-beaded with fine, hand cut dovetail joints
- Dressed with swan neck drop handles over pierced back plates
- Quality Hobbs & Co. brass locks, key absent

Highly regarded, Bartholomew & Fletcher were a London firm established in 1843 with premises at 217 & 219 Tottenham Court Road, this piece testament to the high quality of their craftsmanship. Hobbs & Co. of London were a superior locksmith and exhibited at The Paris Exhibition in 1855.

DIMENSIONS

Max Width: 125cm (49.25")
 Max Depth: 51cm (20")
 Max Height: 169cm (66.5")
 Table Top Height: 56cm (22")



Search [London Fine](#) for #12.1633, or scan the QR code for more photos and details

+44 (0) 207 1833 511

London Fine Ltd
 The Antique Village
 The Old Whiteways Cider Factory
 Hele, Devon, EX5 4PW

sales@londonfine.co.uk
 E. & O. E.