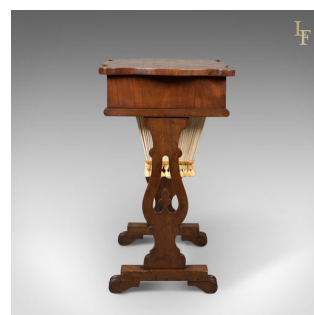


Antique Work Table, Victorian, Sewing, Chess, English c.1860



DESCRIPTION

Our Stock # LFA-1649

This is an antique work table, a Victorian sewing station, English dating to circa 1860.

- Mahogany and walnut with attractive grain interest and a desirable aged patina
- Good consistent colour in a waxed polished finish
- Raised on pierced, shaped legs united by a fretwork stretcher
- Standing upon block, square section platforms over scrolled feet
- Shaped top featuring a chess board inlaid in kingwood and boxwood
- Compartmentalised frieze drawer complete with original lining paper and working lock and key
- Lower sliding, lined 'scraps' drawer dressed with ruched cream fabric trimmed with tassels

Excellent proportions in a superior quality piece with solid joints and construction. Delivered waxed, polished and ready for the home.

Search [London Fine for #LFA-1649](#) or scan the QR code for more photos and details

DIMENSIONS

Max Width: 57cm (22.5")

Max Depth: 43cm (17")

Max Height: 71cm (28")

