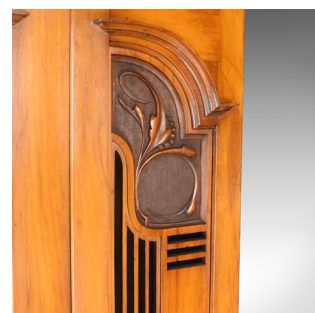
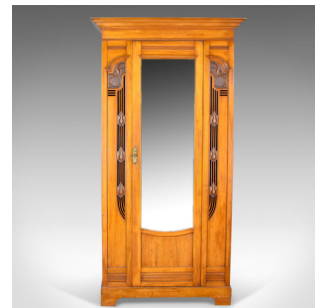


Antique Single Wardrobe, Satinwood, English, Compactum, Art Nouveau Circa 1920



DESCRIPTION

Our Stock # 11.3428

This is an antique single wardrobe in satinwood, an English compactum from the Art Nouveau movement of the early 20th century, circa 1920.

- Delightful piece with classic Art Nouveau overtones
- Good colour throughout with a desirable aged patina
- Raised on an open bracket foot and topped with a crown moulding
- Fitted with a hanging rail for convenience
- Central door features shaped, bevel edged mirror
- Brass lock escutcheon with pull and working lock and key
- Flanked by pierced fretwork decoration
- Punctuated by carved stylised foliate appliqué

A super wardrobe with solid joints and construction. Delivered waxed, polished and ready for the home.

Search [London Fine for #11.3428](#) , or scan the QR code for more photos and details

DIMENSIONS

At the crown moulding:

Max Width: 106cm (41.75")

Max Depth: 48cm (19")

Max Height: 203cm (80")

Cabinet Width: 92cm (36.25")

Cabinet Depth: 41cm (16.25")

