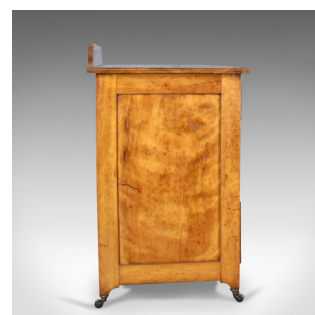


## Antique Chest of Drawers, Satinwood, English, Victorian Bedroom Circa 1900



### DESCRIPTION

Our Stock # 18.5097

This is an antique chest of drawers in satinwood. An English, Victorian piece dating to circa 1900.

- Attractive shimmer to the well figured satinwood
- Good colour with a desirable aged patina
- Configured in a 'two over two' graduated arrangement
- Top displays well with moulded edge detail and backed with a shaped upstand
- Field panel ends add interest from every angle
- Raised on squat, square section legs riding on ceramic castors
- Dovetailed drawers with gently chamfered frame
- Dressed with rope twist drop handles over pressed brass backplates
- Working lock and key, single key operates all locks, brass keyhole linings

A fine and practical chest crafted in gorgeous timber. Certain to look stunning in any room of the home. Solid joints and construction, delivered waxed, polished and ready for the home.

Search [London Fine for #18.5097](#), or scan the QR code for more photos and details

### DIMENSIONS

Max Width: 107cm (42.25")

Max Depth: 53cm (20.75")

Height: 82cm (32.25")

Plus Upstand: 7cm (2.75")

