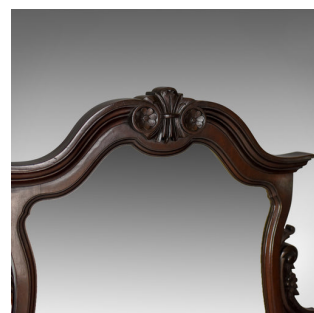
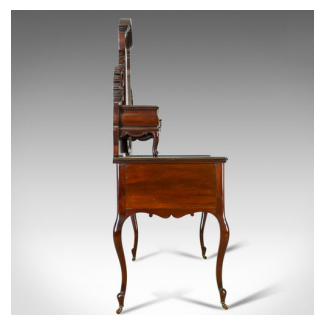


## Antique Dressing Table, Mahogany, English Circa 1910



### DESCRIPTION

Our Stock # 18.5109

This is an antique dressing table in mahogany with original wear to finish. An English piece dating to circa 1910.

- Elaborate and highly decorated dressing table
- Of quality, dark stained mahogany decorated with blind fret geometric lattice
- Original finish with expected signs of age consistent with a century of use
- Bevel edged, shaped mirror plate tilts in frame
- Carved central motif to pediment over and flanked by foliate carved upstands
- A pair of small vanity drawers raised on squat cabriole legs
- Pairs of drawers flank central frieze drawer creating appealing stepped top
- Shaped apron decorated with carved swags
- Slender cabriole legs to bump foot over ceramic castors

A highly decorative piece displaying expected signs of wear to the finish. Solid joints and construction, delivered waxed, polished and ready for the home.

Search [London Fine for #18.5109](#) , or scan the QR code for more photos and details

### DIMENSIONS

Max Width: 122cm (48")

Max Depth: 61cm (24")

Max Height: 171cm (67.25")

