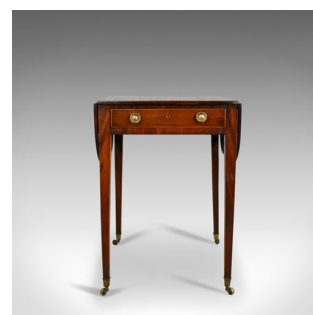


Antique, Pembroke Table, English, Georgian, Mahogany Side Hepplewhite Circa 1795



DESCRIPTION

Our Stock # 18.5099

This is an antique Pembroke table, an English, late Georgian, mahogany side table with Hepplewhite influence dating to circa 1795.

- Rich, warm hues of russet browns to the quality mahogany
- Grain interest in the deep, wax polished finish
- Of quality craftsmanship with a desirable aged patina
- The well figured top features a cross banded perimeter
- Delineated by a boxwood string detail
- The drop-flap extension leaves lift easily, supported on shaped brackets
- A single oak lined, frieze drawer to one end with faux drawer front the other
- Dressed with a pair of loop handles over pressed brass backplates
- Boxwood string and key hole escutcheon, original lock with key absent
- Raised on elegant, square section, tapering legs
- Riding upon solid brass cup castors

Search [London Fine for #18.5099](#) , or scan the QR code for more photos and details

DIMENSIONS

Max Width: 74cm (29.25")

Min Depth: 52cm (20.5")

Extended Depth: 96cm (37.75")

Max Height: 71cm (28")

About Pembroke Tables:

The debated origins of the Pembroke table are more likely to rest with the 9th Earl of Pembroke, Henry Herbert (1693-1751), an English aristocrat and amateur architect. Emerging in the late 18th century and predominantly made from mahogany, Pembroke tables served a variety of uses from dining, tea and writing to bedside companions. The convenience to store away and extend with the drop leaves when required made it a very versatile and popular furniture.

