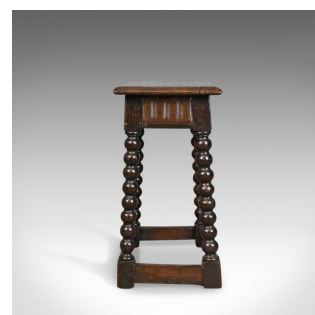


Antique Joint Stool, English, Late Georgian, Oak, Seat, Circa 1800



DESCRIPTION

Our Stock # 18.5105

This is an antique joint stool. An English, late Georgian, oak seat dating to circa 1800.

- Good consistent colour to the dark English oak
- Of quality craftsmanship displaying grain interest to the top
- Solidly constructed with desirable aged patina
- Slab seat panel with moulded edge detail
- Fluted colonnade decoration to the frieze
- Delightful bobbin turned legs united by a box stretcher

In classic form with solid joints and construction, delivered waxed, polished and ready for the home.

Search [London Fine for #18.5105](#) , or scan the QR code for more photos and details

DIMENSIONS

Max Width: 51cm (20")

Max Depth: 29cm (11.5")

Max Height: 57.25cm (22.5")

