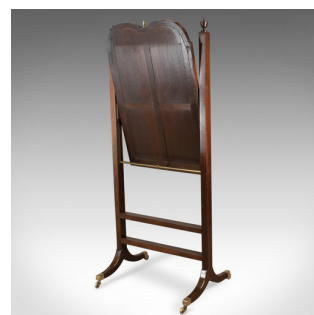
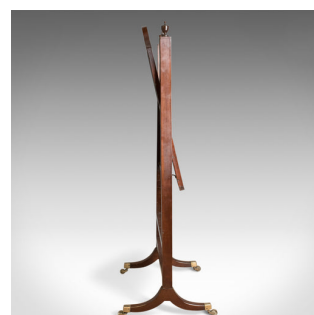
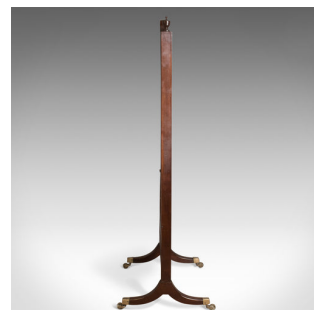


Antique Cheval Mirror, English, Regency, Tilting, Dressing, Mahogany Circa 1820



DESCRIPTION

Our Stock # 10.1503

This is an antique cheval mirror, an English, Regency, tilting dressing mirror in mahogany stand dating to circa 1820.

- Quality, heavy hand bevelled, shaped mirror plate
- Mounted in humped mahogany frame
- Topped with brass spire finial
- Panelled back ideal for centre room placement
- Fixed height with leather strap tilt retainer
- Tilting action in robust mahogany frame
- Square section uprights topped with classical urn finials
- United by twin stretchers for added stability
- Upon swept legs terminating in capped brass castors

A fine antique cheval mirror from the English Regency. Solid joints and construction, delivered waxed, polished and ready for the home.

Search [London Fine for #10.1503](#) , or scan the QR code for more photos and details

DIMENSIONS

Max Width: 76cm (30")

Max Depth: 53.5cm (21")

Max Height: 176cm (69.25")

