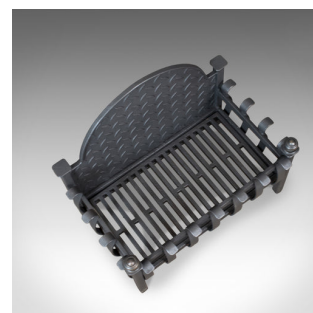




Antique Fire Basket, Victorian Fireplace Grate, English Circa 1900



DESCRIPTION

Our Stock # 11.3497

This is an antique fire basket, a Victorian fireplace grate, English dating to circa 1900.

- A pleasing fire grate presented in very good antique condition
- In lovely hand forged iron and suitable for all fuel types
- Of quality craftsmanship and finished in graphite grate polish
- Solidly constructed with classic English styling
- Large basket supported by stout square section legs
- Twin rails with serpentine bars featuring scrolled ends
- Detailed bronze finials capping the front legs
- Desirable humped back-plate for heat retention and reflection
- Removable grate for easy cleaning

A simply lovely grate to be welcomed into any fireside location. Solid joints and construction, delivered ready for the home.

Search [London Fine for #11.3497](#) , or scan the QR code for more photos and details

DIMENSIONS

Max Width: 56cm (22")

Max Depth: 34cm (13.5")

Max Height: 48cm (19")

