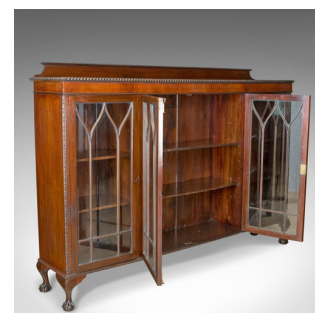
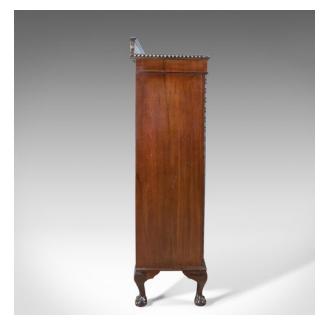




Antique Glazed Bookcase, Long, Edwardian, Mahogany, Cabinet, Gothic Circa 1910



DESCRIPTION

Our Stock # 18.5102

This is an antique glazed bookcase, a long English, Edwardian, mahogany cabinet with gothic overtones dating to circa 1910.

- Classic English styling with gothic overtones
- In select mahogany displaying grain interest
- Desirable aged patina with a wax polished finish
- Standing upon squat cabriole legs with carved claw and ball feet
- Wide top displays well with a gadrooned edge detail
- Extended to the rear for close wall placement over skirting
- Shaped and capped up-stand
- Narrow frieze over four, eight pane, arched astragal glazed doors
- Closing smoothly and locking with working locks and key
- Internally fitted with pairs of adjustable shelves to each cabinet

Search [London Fine for #18.5102](#) , or scan the QR code for more photos and details

DIMENSIONS

Max Width: 183cm (72")

Max Depth: 36.5cm (14.25")

Max Height: 128cm (50.5")

