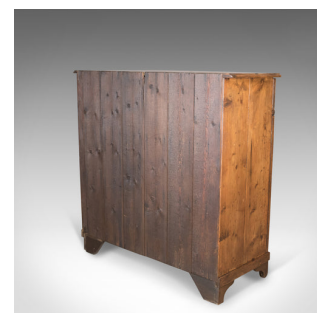




## Antique Pine Cupboard, English, Victorian, Cabinet, Pitch Pine Circa 1880



### DESCRIPTION

Our Stock # 18.5106

This is an antique pine cupboard, an English, Victorian, panelled cabinet in pitch pine dating to circa 1880.

- Attractive honey hues to the antique pitch pine
- Grain interest in the lustrous, wax polished finish
- Desirable aged patina
- Two plank top displays well with moulded edge detail
- Standing upon bracket feet with panelled back boards
- Full width field panel frieze drawer with contrasting turned pull
- Over a pair of double field panel cabinet doors with contrasting turned pulls
- Featuring the original working lock and key
- Panel mounts finished with stop ended chamfers
- Inside space divided by a pair of shelves

Search [London Fine for #18.5106](#) , or scan the QR code for more photos and details

### DIMENSIONS

Max Width: 111cm (43.75")

Max Depth: 45cm (17.75")

Max Height: 108.5cm (42.75")

