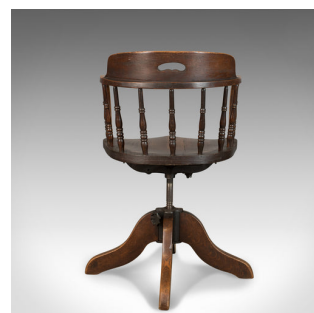
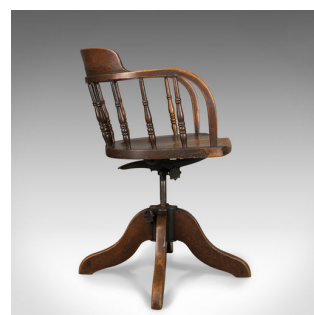
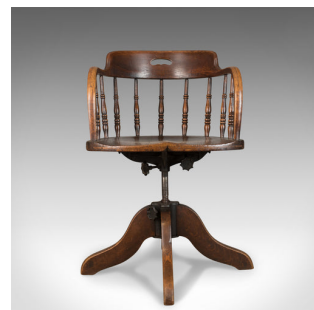


Antique Desk Chair, Victorian Captain's Armchair, Oak, Windsor Circa 1890



DESCRIPTION

Our Stock # 18.5031

This is an antique desk chair, a rotating and reclining Victorian captain's armchair in oak. A Windsor dating to circa 1890.

- English oak with grain interest and attractive caramel hues
- Traditionally crafted with a desirable aged patina
- Bow-back bent-wood armrest with extended back rest
- Supported on ring turned, flared spindles in Windsor fashion
- Solid oak saddle seat slab
- Rise, fall, rotate and tilt actions
- Standing upon four stout, swept legs

An appealing antique desk chair with solid joints and construction. Delivered waxed, polished and ready for the home.

Search [London Fine for #18.5031](#) , or scan the QR code for more photos and details

DIMENSIONS

Max Width: 53.25cm (21")
Max Depth: 48cm (19")
Height: 79cm (31") - 87.5cm (34.5")
Seat Width: 45.75cm (18")
Seat Depth: 43cm (17")
Min Seat Height: 42cm (16.5")
Max Seat Height: 55cm (21.75")

