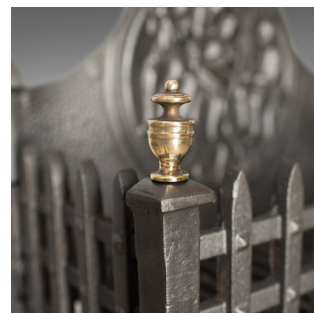


## Antique Fire Basket, English, Victorian, Fireplace Grate Circa 1900



## DESCRIPTION

Our Stock # 11.3476

This is an antique fire basket, an English Victorian fireplace grate dating to circa 1900.

- A pleasing fire grate presented in very good antique condition
- Of quality craftsmanship and finished in graphite grate polish
- In lovely hand forged iron and suitable for all fuel types
- Solidly constructed with classic English styling
- Large basket supported by stout square section legs
- Twin rails supporting classic pointed bars
- Detailed bronze finials capping the front legs
- Themed humped back-plate for heat retention and reflection
- Removable grate for easy cleaning

A simply lovely grate to be welcomed into any fireside location. Solid joints and construction, delivered ready for the home.

Search [London Fine for #11.3476](#) , or scan the QR code for more photos and details

## DIMENSIONS

Max Width: 56cm (22")

Max Depth: 28cm (11")

Max Height: 27cm (10.75")

