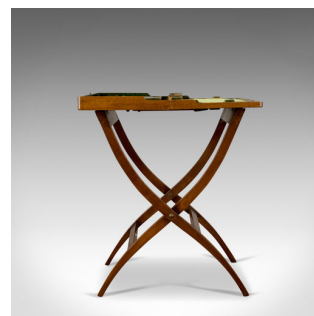
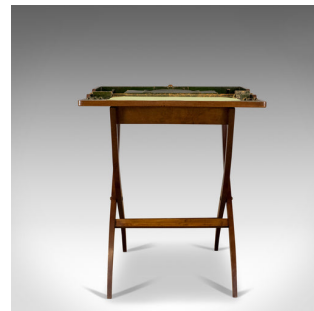


Antique Coaching Desk, Asprey London, Edwardian, Folding, Portable, Travel c1910



DESCRIPTION

Our Stock # 18.5226

This is an antique coaching desk by Asprey London, an Edwardian folding, portable, travel writing table dating to circa 1910.

- A superb example of an antique coaching desk
- In original condition and beautifully presented
- By the prestigious Mayfair retailer, Asprey London
- Of superior craftsmanship in select mahogany
- Raised upon a shaped 'X' frame with quality brass fittings
- Opens and closes with ease to present a writing suite in English green leather
- Blotter, nib box, ink well, stationery compartments and pen sleeves

A superb antique coaching desk retailed from one of the very finest establishments.

Search [London Fine for #18.5226](#) , or scan the QR code for more photos and details

DIMENSIONS

Open:

Max Width: 61cm (24")

Max Depth: 61cm (24")

Max Height: 70.5cm (27.75")

Folded:

Max Width: 61cm (24")

Max Depth: 19cm (7.5")

Max Height: 88.5cm (34.75")

