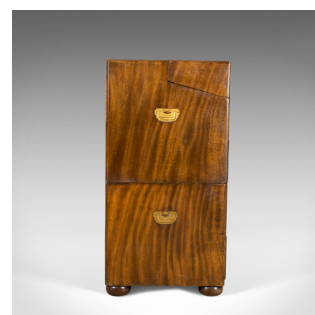


Antique Campaign Chest, Edwardian, Officer's Secrétaire, Drawers, Bureau



DESCRIPTION

Our Stock # 18.5217

This is an antique campaign chest, an English, Edwardian, Officer's secrétaire chest of drawers, a bureau in camphor wood dating to circa 1910.

- Appealing well figured camphor wood
- Decorated in brass inlay and raised on bun feet
- Two part, campaign chest with brass inset carry handles
- Arranged folding writing desk over two over two drawers
- Working locks and keys to the writing slope, drawer key absent
- Writing slope hinges open to reveal a tooled leather skiver
- Access to document storage beneath the forward slope
- Locking access to the rear beneath a suite of stationery drawers
- Beneath a series of cubby holes flank a locking central cupboard

A fine quality antique campaign chest with abundant interest and storage. Solid joints and construction, delivered waxed, polished and ready for the home.

Search [London Fine for #18.5217](#) , or scan the QR code for more photos and details

DIMENSIONS

Max Width: 91.5cm (36")

Max Depth: 48cm (19")

Max Height: 94.5cm (37.25")

