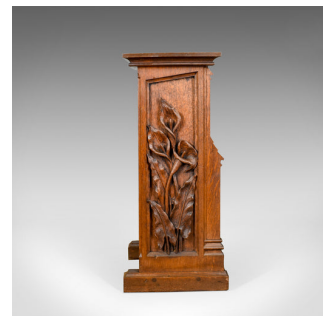


Antique Lectern, Carved, English, Oak, Stand, Ecclesiastical Gothic, Pugin c1880



DESCRIPTION

Our Stock # 18.5254

This is an antique lectern, a carved, English, oak stand in the ecclesiastical gothic taste with Pugin esque overtones.

- Of quality craftsmanship in solid English oak
- Well figured with delightful colour and a desirable aged patina
- Pugin-esque ecclesiastical gothic with a hint of Art Nouveau
- Well executed relief and pierced carved decoration
- The top sits flat with edge moulding beneath
- Field panel sides decorated with sprays of carved lilies – symbolising humility and devotion
- Buttressed columns flank central opening with broad stretcher foot rest
- Shaped, mirrored brackets decorating the upper opening
- Attractively decorated with pierce carved floral and foliate detail

A joyful antique lectern that would work well as a hall or side table. Solid joints and construction, delivered waxed, polished and ready for the home.

Search [London Fine for #18.5254](#) , or scan the QR code for more photos and details

DIMENSIONS

Max Width: 56cm (22")
 Max Depth: 32cm (12.5")
 Max Height: 80cm (31.5")

