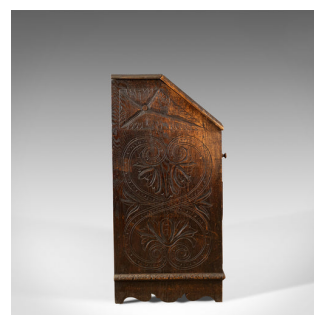


## Antique Bureau, English, Oak, Victorian, Green Man, Writing Desk, Circa 1880



### DESCRIPTION

Our Stock # 18.5252

This is an antique bureau in English oak. A Victorian green man writing desk dating to c.1880.

- Warm country feel and a desirable aged patina in the wax polished finish
- Profusely carved and decorated with green man masks and foliate detail
- Standing upon bracket feet with a three-quarter serpentine apron
- Three full width, graduating drawers, locks present key absent
- The fall opens and rests upon a pair of stout lopers
- Offering a generous desk space at a comfortable height
- The dark leather skiver with some sympathetic, historical repairs
- To the rear a suite of stationery shelves and a pair of drawers with turned pulls

A charming example of period, English country furniture. Solid joints and construction, delivered waxed, polished and ready for the home.

Search [London Fine for #18.5252](#) , or scan the QR code for more photos and details

### DIMENSIONS

Max Width: 91.5cm (36")  
 Max Depth: 48.25cm (19")  
 Max Height: 99cm (39")  
 Desk Width: 81cm (32")  
 Desk Depth: 61cm (24")  
 Desk Height: 73cm (28.75")

