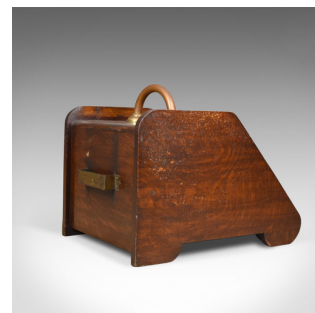
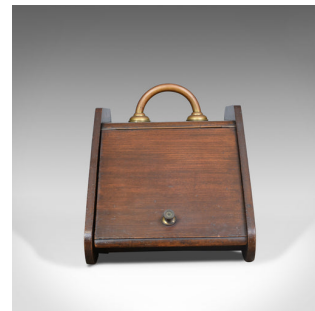


## Large Antique Log Bin, Coal Purdonium, Edwardian, Fireside, Circa 1910



### DESCRIPTION

Our Stock # 18.5313

This is a large antique log bin, a coal Purdonium from the Edwardian fireside dating to circa 1910.

- Very versatile offering use for coal, logs or kindling, or simply as a decorative item
- Delightful biscuit hues to the English oak displaying grain interest
- Quality brass work carrying handle and lid pull
- Rising from a shaped bracket base
- Shovel sleeve to the rear, shovel absent
- Of generous proportions, larger than most

A very pleasing English, Edwardian fireside cabinet presented in good antique condition. Solid joints and construction, delivered waxed, polished & ready for the home.

Search [London Fine for #18.5313](#) , or scan the QR code for more photos and details

### DIMENSIONS

Max Width: 36cm (14.25")

Max Depth: 56cm (22")

Max Height: 41cm (16.25")

