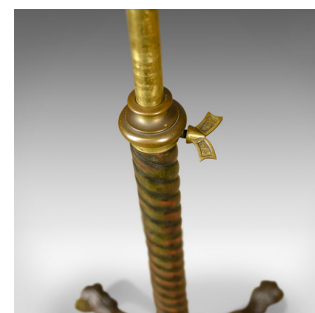
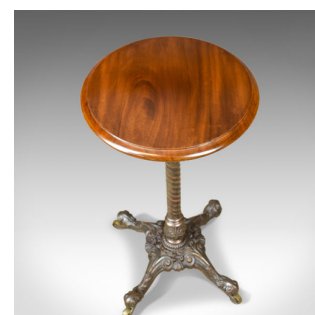


Heavy Antique Adjustable Table, Victorian Plant Stand, Side Lamp Mahogany  
c.1850



**DESCRIPTION**

Our Stock # 18.5323

This is a heavy antique adjustable table, a Victorian plant stand or side wine table in mahogany, brass and iron dating to circa 1850.

- Of quality craftsmanship
- Good colour coupled with a desirable aged patina
- Easily adjusted and locked to desired height
- Weighing in at 27lb (12Kg) offering a very stable platform
- Circular top in select, well figured mahogany with edge moulding detail
- Rising on a brass pole within a barley twist stem with acanthus leaf mount
- Riding upon an appealing, cast iron, quadripartite cabriole base
- Decorated with scrolls, shells and acanthus leaves
- Riding upon large, solid brass castors

An unusual and delightful antique table. Solid joints and construction, delivered waxed, polished and ready for the home.

Search [London Fine for #18.5323](#) , or scan the QR code for more photos and details

**DIMENSIONS**

- Max Width: 34cm (13.5")
- Max Depth: 34cm (13.5")
- Min Height: 69.5cm (27.25")
- Max Height: 115cm (45.25")

