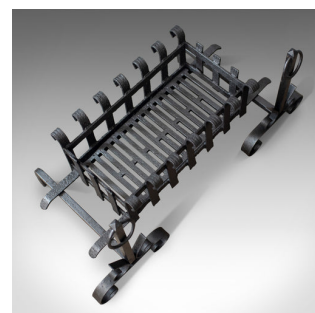
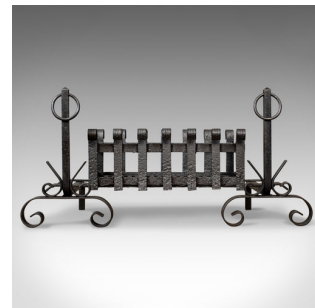


Antique Fire Basket on Andirons, Fire Dogs, English, Fireplace Grate c.1900



DESCRIPTION

Our Stock # 18.5170

This is an antique fire basket and andirons, or fire dogs, an English, Victorian fireplace accessory with a removable iron grate dating to the early 20th century, circa 1900.

- A fire basket raised on andirons presented in very good condition
- A quality grate and dogs in attractive hand forged and cast iron
- Standing on scroll arched andirons with bracketed risers presenting loops
- Solidly constructed and suitable for all fuel types
- Scroll top basket styling featuring twin rails
- Robust, of quality craftsmanship and finished in traditional graphite

A simply lovely grate to be welcomed into any fireside location, delivered ready for the home.

Search [London Fine for #18.5170](#) , or scan the QR code for more photos and details

DIMENSIONS

- Max Width: 72cm (28.25")
- Max Depth: 41cm (16.25")
- Max Height: 39.5cm (15.5")
- Basket Width: 47cm (18.5")
- Basket Depth: 30cm (11.75")
- Basket Height: 20cm (7.75")

