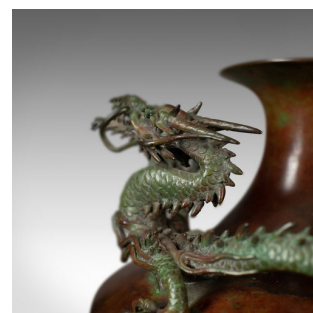
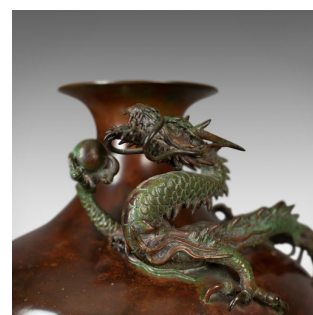
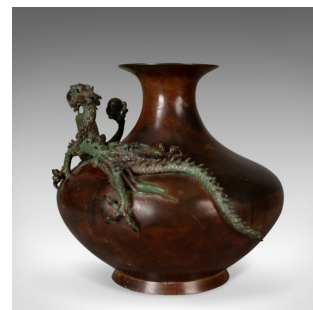


## Chinese Urn, Vase, Bronze, Dragon, Pearl, Bowl, C20th, Oriental, Centrepiece

**DESCRIPTION**

Our Stock # 18.5347

This is a Chinese urn or vase in bronze with a dragon and pearl mounted to the bowl, a 20th century oriental centrepiece.

- Superbly detailed bronze lithe dragon and pearl
- The dragon displaying well in multiple hues
- Mounted to the bowl of the urn wrapping half way around
- In first class order, the urn in good proportion
- Flared neck and sound base
- Makers mark to the underside

A wonderful display item or centrepiece ready for the home.

Search [London Fine for #18.5347](#), or scan the QR code for more photos and details

**DIMENSIONS**

Max Width: 24cm (9.5")

Max Depth: 24cm (9.5")

Max Height: 23cm (9")

Neck Flair: 11cm (4.25")

Aperture Width: 5.5cm (2.25")

