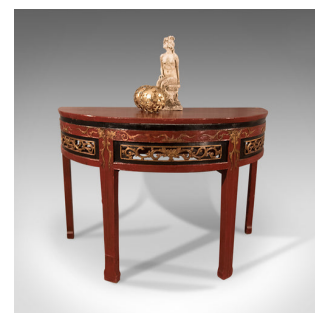
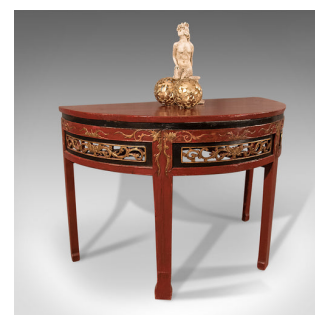


Pair of Antique Chinese Demi-Lune Tables, 19th Century, Circa 1850



DESCRIPTION

Our Stock #11.3149

This is an interesting pair of antique, Chinese, demi-lune tables presented in good antique condition and dating to the mid 19th century, circa 1850.

- A pair of oriental demi-lune side tables
- Offering the opportunity to be used together as a centre table
- With desirable earthy red painted finish displaying well
- Quality pierced frieze scroll work in gilt finish framed by an ebonised border
- Relief carved foliate detailing with gilded finish
- Standing over gently tapered legs terminating in a block foot

A versatile pair of oriental, antique 'D' end tables in good condition. Solid joints and construction delivered waxed, polished & ready for the home.

Search [London Fine](#) for #11.3149 , or scan the QR code for more photos and details

DIMENSIONS

Max Width: 121cm (47.75")

Max Depth: 60cm (23.5")

Max Height: 83cm (32.75")

