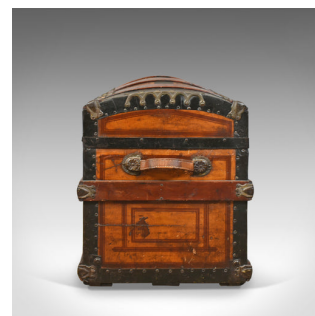


## Antique Dome Topped Carriage Chest, English, Victorian, Trunk, 19th Century



## DESCRIPTION

Our Stock # 18.5352

This is an antique dome topped carriage chest, an English, Victorian trunk dating to the mid 19th century circa 1870.

- Robust outer construction strapped and bound
- Dome top dressed with metal plates
- Thick leather carry handles to either end
- Flip clasps closing securely
- Panels decorated with foliate detail in muted colours
- Hidden castors beneath for ease of movement
- The lid lifts on quality hingeing
- Internally decorated with panel pictures
- On mosaic background framed in elaborate borders
- Storage within the lid behind a fold down flap
- To the right a tray that lifts and locks into the lid

Search [London Fine for #18.5352](#) , or scan the QR code for more photos and details

## DIMENSIONS

Max Width: 74cm (29.25")

Max Depth: 47cm (18.5")

Max Height: 56cm (22")

