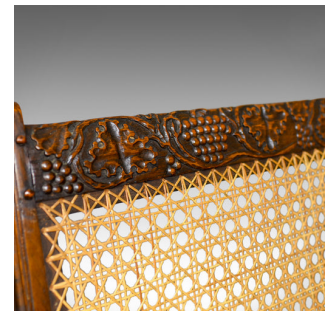


## Pair of Antique, Conservatory Chairs, Oak, English, Bergere Armchairs Circa 1910



### DESCRIPTION

Our Stock # 18.5488

A classic pair of antique conservatory chairs in oak, English Bergere armchairs with loose cushions dating to the Edwardian period of the early 20th century, circa 1910.

- Beautifully crafted in oak with good colour and graining
- Raised on magnificent stout turned legs to the front
- Appealing carved guilloche seat rail
- Crest rail beautifully carved with fruiting vines
- Deep seat enclosed with caning in good condition
- Long arm rests terminate in attractive oblique, carved grips
- Traditionally sprung stuff-over seat panels with brocade trim
- Feather filled loose cushions in good order
- Finished in a damask cloth in earthy pastel tones

An attractive and comfortable pair of antique chairs in good condition, solid joints and construction delivered waxed, polished and ready for the home.

Search [London Fine for #18.5488](#) , or scan the QR code for more photos and details

### DIMENSIONS

Max Width: 75cm (29.5")  
Max Depth: 82cm (32.25")  
Max Height: 77cm (30.25")  
Seat Width: 50cm (19.75")  
Seat Depth: 56cm (22")  
Seat Height: 38cm (15")

