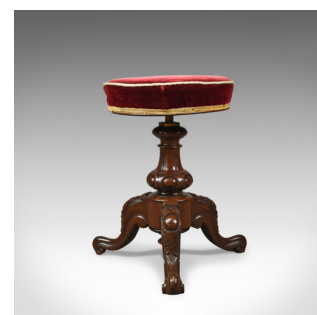
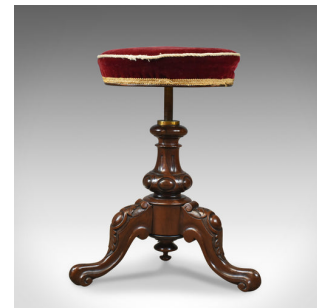


Antique Piano Stool, Rosewood, Adjustable, Music, English, Victorian, Circa 1880



DESCRIPTION

Our Stock # 18.5428

This is an antique piano stool in rosewood an adjustable music seat, English, Victorian and dating to the latter part of the 19th century, circa 1880.

- Beautifully made in rosewood with a waxed finish and desirable aged patina
- Raised on a tripod of cabriole legs terminating in scrolled toes
- Well carved acanthus leaves decorating the knees
- Inverted, turned finial beneath bulbous 'squash' baluster column
- Threaded adjustable riser offering seating from 18.5 inches up to 21.75 inches
- Traditionally stuffed, upholstered in a red velour cloth with contrasting trim

A super example, comfortable and stable. Solid joints and construction, delivered waxed, polished and ready for the home.

Search [London Fine for #18.5428](#) , or scan the QR code for more photos and details

DIMENSIONS

Max Width: 40.5cm (16")
 Max Depth: 40.5cm (16")
 Min Height: 47cm (18.5")
 Max Height: 55cm (21.75")
 Seat Diameter: 34.5cm (13.5")

