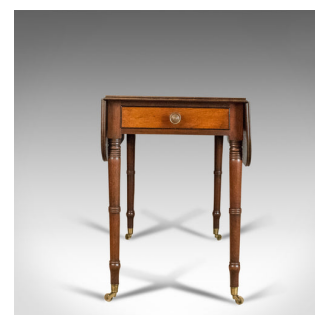


Antique Pembroke Table, Mahogany, English, Georgian, Drop Flap Dining Circa 1820



DESCRIPTION

Our Stock # 18.5101

This is an antique Pembroke table in mahogany. An English, Georgian drop flap dining table dating to circa 1820.

- Fine example in select mahogany with attractive mid-tone pallet
- Grain interest with desirable aged patina
- Elegant proportions
- Raised on gently tapering, triple ring turned legs
- Riding upon the original, solid brass castors
- Mahogany lined, frieze drawer to one end with faux drawer the other
- Ebonised keyline detail and dressed with quality pressed brass pulls
- Extension leaves lift smoothly and rest upon shaped brackets
- Presenting a wonderfully patinated top of useful proportion
- Ideal as a side or games table or for intimate dining

Search [London Fine for #18.5101](#) , or scan the QR code for more photos and details

DIMENSIONS

Max Width: 99cm (39")
 Min Depth: 50cm (19.75")
 Extended Depth: 93cm (36.5")
 Max Height: 73cm (28.75")

