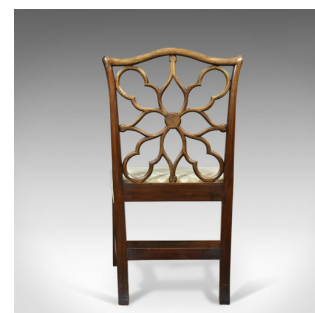
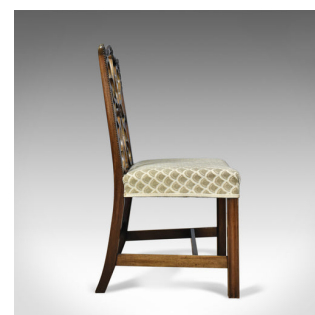




Antique Side Chair, Victorian, English, Mahogany, Chippendale Revival Circa 1900



DESCRIPTION

Our Stock # 18.5451

This is an antique side chair, a late Victorian, English, mahogany, Chippendale revival chair dating to circa 1900.

- Crafted in select cuts of beautifully aged mahogany
- Displaying good colour and a desirable aged patina
- Gently flared stiles rising to a carved, serpentine crest rail
- Attractive pierced back splat centred on a carved rosette
- Raised on square section legs, chamfered on the inner corners
- Generous proportions with broad comfortable seat pad
- Stuff over seat panel finished in a patterned damask cloth
- Traditionally stuffed in good supportive order

An appealing antique side chair with solid joints and construction. Delivered waxed, polished and ready for the home.

Search [London Fine for #18.5451](#) , or scan the QR code for more photos and details

DIMENSIONS

Max Width: 56cm (22")
Max Depth: 53cm (20.75")
Max Height: 96cm (37.75")
Seat Width: 56cm (22")
Seat Depth: 40.75cm (16")
Seat Height: 45.75cm (18")

