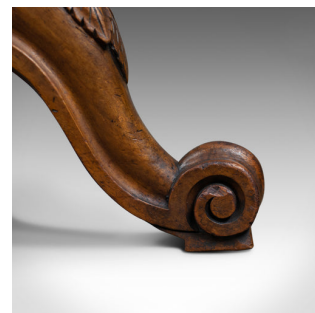
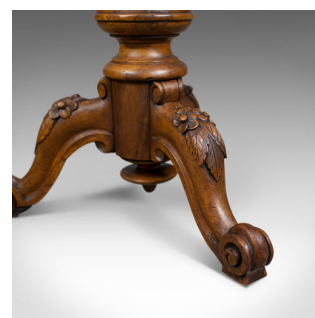


Antique Piano Stool, Walnut, Adjustable, English, Victorian, Seat Circa 1860



DESCRIPTION

Our Stock # 18.5582

This is an antique piano stool in walnut, an adjustable, English, Victorian seat dating to the mid 19th century, circa 1860.

- Beautifully made in solid walnut with a waxed finish and desirable aged patina
- Raised on a tripod of cabriole legs terminating in scrolled toes
- Well carved acanthus leaves decorating the knees
- Inverted, turned finial beneath bulbous baluster column
- Threaded adjustable riser offering comfort for the musician
- Traditionally stuffed seat pad finished in a pale rouge cloth

An attractive antique piano stool. Delivered waxed, polished and ready for the home.

Search [London Fine for #18.5582](#) , or scan the QR code for more photos and details

DIMENSIONS

Max Width: 43cm (17")

Max Depth: 43cm (17")

Min Height: 46cm (18")

Max Height: 61cm (24")

Seat Diameter: 30cm (11.75")

