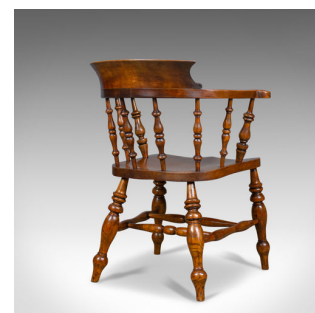
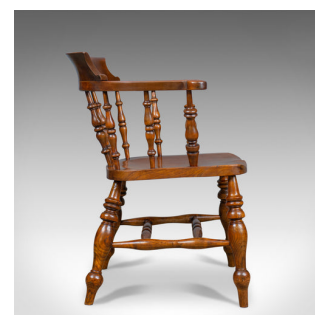


Antique Elbow Chair, Victorian, Elm, Bow-Back, Smokers, Captains, Desk c.1880



DESCRIPTION

Our Stock # 18.5593

This is an antique elbow chair, an English, Victorian, elm, bow-back 'smokers', or 'captains' armchair dating to circa 1880.

- An appealing country kitchen, bow back elbow chair
- Grain interest to the elm and fruitwood in a wax polished finish
- Solid and stable offering a comfortable seat
- Scrolled armrests raised on turned spindles
- Deep, shaped crest rail for added back support
- Solid elm saddle seat slab displays well
- Raised on stout turned legs united by double 'H' stretcher

A classic chair from the Victorian, provincial country kitchen. Solid joints and construction, delivered waxed, polished and ready for the home.

Search [London Fine for #18.5593](#), or scan the QR code for more photos and details

DIMENSIONS

- Max Width: 66cm (26")
- Max Depth: 56cm (22")
- Max Height: 81cm (32")
- Seat Width: 41cm (16.25")
- Seat Depth: 45cm (17.75")
- Seat Height: 44cm (17.25")

