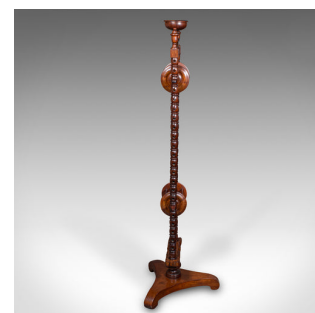
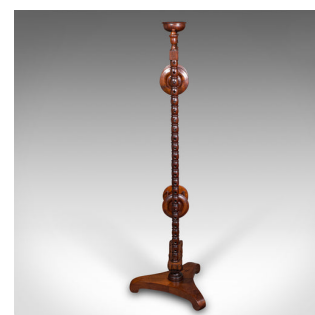
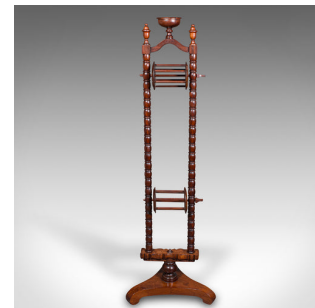


Antique Wool Winder Stand, English, Walnut, Adjustable Yarn Swift, Victorian



DESCRIPTION

Our Stock # 24798

This is an antique wool winder stand. An English, walnut adjustable yarn swift, dating to the early Victorian period, circa 1850.

- <li class="p1">Fascinating early Victorian winder, with a wonderful display appeal
-

<li class="p1">Concave thimble or needle cup sits at the surmount between a pair of turned finials

<li class="p1">Lobed finish accentuates the support stands with collars intersecting each one

<li class="p1">Unusual shaped plinth hosts the supports, the turned bulb showing above and below

<li class="p1">Standing upon a delightful tripartite base with appealing scrolled toes

DIMENSIONS

Max Width: 40.5cm (16")

Max Depth: 35.5cm (14")

Max Height: 125.5cm (49.5")

LIST PRICE

£1,195.00

