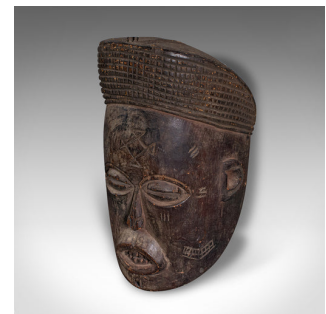


## Antique Chokwe Mask, Central African, Carved Hardwood, Tribal, Victorian, C.1900



### DESCRIPTION

Our Stock # 24746

This is an antique Chokwe mask. A Central African, carved hardwood tribal face mask, dating to the late Victorian period, circa 1900.

- <li class="p1">Fascinating tribal piece, with full face form and rustic craftsmanship
- <li class="p1">Displays a desirable aged patina and in good original order
- <li class="p1">Hand crafted in hardwood, the mask hosts distinct features
- <li class="p1">Engraved with iconography and cross hatch detail
- <li class="p1">The Chokwe tribe are found in Zambia, DR Congo and Angola

This is a delightful antique Chokwe mask, with a distinctive tribal appearance and charmingly presented in original order. Delivered ready for display.

Search [London Fine for #24746](#) , or scan the QR code for more photos and details

### DIMENSIONS

Max Width: 22cm (8.75")

Max Depth: 23cm (9")

Max Height: 37cm (14.5")

### LIST PRICE

£595.00

