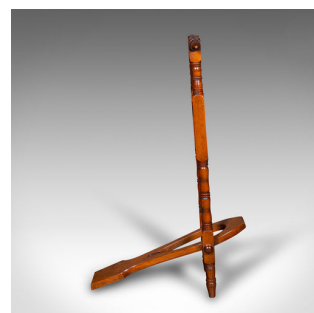
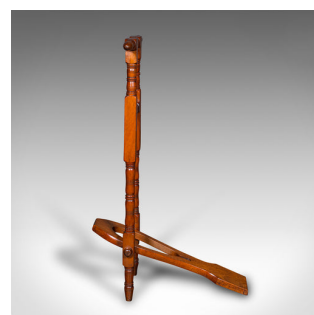
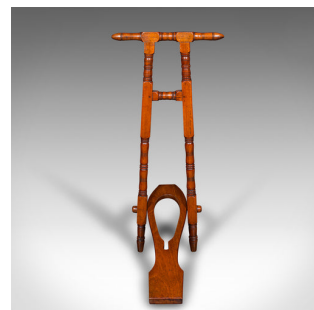


Antique Boot Jack, English, Walnut, Folding Shoe Pull, Entrance Hall, Victorian



DESCRIPTION

Our Stock # 24780

This is an antique boot jack. An English, walnut folding shoe pull, dating to the Victorian period, circa 1880.

- <li class="p1">Fascinating reception hall pull, with appealing colour
-

This is a charming antique boot jack, with a useful folding nature and ideal for any entrance hall. Solid joints and construction, delivered ready for the home.

Search [London Fine for #24780](#) , or scan the QR code for more photos and details

DIMENSIONS

Max Width: 39.5cm (15.5")
Max Depth: 51cm (20")
Max Height: 83.5cm (32.75")
Folded Width: 39.5cm (15.5")
Folded Depth: 3.5cm (1.5")
Folded Height: 84cm (33")

LIST PRICE

£795.00

