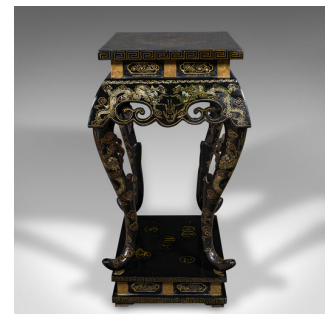


Antique Jardiniere Stand, Japanese, Display Table, Aesthetic Period, Victorian



DESCRIPTION

Our Stock # 24692

This is an antique 2-tier jardiniere stand. A Japanese, ebonised display table, dating to the Victorian period, circa 1880.

- <li class="p1">Delightful Japanned example, popular during the Aesthetic period
- <li class="p1">Displays a desirable aged patina and in good order
- <li class="p1">Ebonised frame presents deep black hues, accentuated with profuse detail
- <li class="p1">Arranged with a display surface over a useful under tier

- <li class="p1">The top hosts a central medallion with a water dragon motif
- <li class="p1">Foliate decor surrounds the medallion, with Greek key pattern to the edge
- <li class="p1">Shaped apron with fretwork detail plays host to double dragon scenes
- <li class="p1">Striking, tall cabriole legs at each corner, standing upon a plinth base

This is a charming antique 2-tier jardiniere stand, with striking Japanned taste and appealing in its versatility. Delivered ready for the home.

Search [London Fine for #24692](#) , or scan the QR code for more photos and details

DIMENSIONS

- Max Width: 51cm (20")
- Max Depth: 41cm (16.25")
- Max Height: 74.5cm (29.25")
- Under Tier Width: 42.5cm (16.75")
- Under Tier Depth: 32.5cm (12.75")
- Under Tier Height: 46cm (18")

LIST PRICE

£1,495.00

