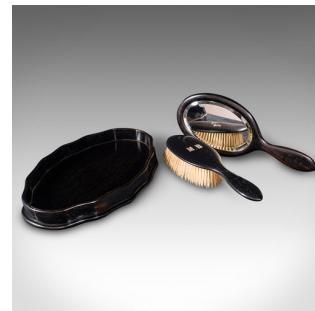


Antique Reception Hall Valet Set, English, Ebony, Mirror, Hand Brush, Edwardian



DESCRIPTION

Our Stock # 24697

This is an antique reception hall valet set. An English, ebony and glass mirror and jacket brush, dating to the Edwardian period, circa 1910.

- <li class="p1">Appealing set, ideal for brushing ones jacket before leaving the house
-

This is a charming antique reception hall valet set, with appealingly tactile tools and a useful tray. Delivered ready for the home.

Search [London Fine for #24697](#) , or scan the QR code for more photos and details

DIMENSIONS

Max Width: 31cm (12.25")
Max Depth: 20cm (7.75")
Max Height: 3.5cm (1.5")
Mirror Width: 12cm (4.75")
Mirror Depth: 0.5cm (.25")
Mirror Length: 28.5cm (11.25")
Mirror Plate Width: 9cm (3.5")
Mirror Plate Height: 14cm (5.5")
Brush Width: 7.5cm (3")
Brush Height: 4.5cm (1.75")
Brush Depth: 24cm (9.5")

LIST PRICE

£395.00

