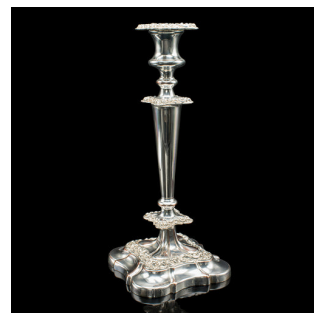


Tall Pair, Antique Candlesticks, English, Silver Plated Candle Sconce, Edwardian



DESCRIPTION

Our Stock # 24825

This is a pair of tall antique candlesticks. An English, silver plated candle sconce, dating to the Edwardian period, circa 1910.

- <li class="p1">Elegant Edwardian candlesticks with a bright appearance and fine detail
- <li class="p1">Displaying a desirable aged patina and in original order
- <li class="p1">Superb, highly reflective silver plate presents beautifully
- <li class="p1">Some light copper hues showing from decades of gentle use

- <li class="p1">Ornate foliate relief detail decorates the sconce, upper collar and base
- <li class="p1">Each with a removable sconce offering a nozzle diameter of 23mm (1")
- <li class="p1">Wide quarterfoil base dressed with the original emerald green baize
- <li class="p1">Engraved to the footer with 'Silver on Copper'

This is an attractive pair of tall antique candlesticks. Ideal for the mantelpiece or upon the dining table as a centrepiece. Delivered polished and ready to display.

Search [London Fine for #24825](#) , or scan the QR code for more photos and details

DIMENSIONS

- Max Width: 15cm (6")
- Max Depth: 15cm (6")
- Max Height: 34.5cm (13.5")
- Nozzle Diameter : 23mm (1")

