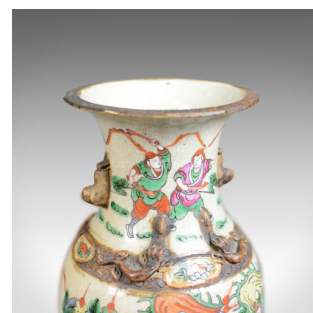
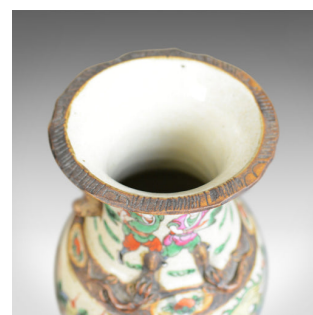


## Mid 20th Century Pair of Chinese Baluster Vases, Painted, Ceramic, Urns



### DESCRIPTION

Our Stock # 18.5629

This is a mid-century pair of Chinese baluster vases, painted ceramic urns.

- Imposing quality pair of ceramic vases
- Profusely decorated in on a cream ground
- Free from any damage or marks
- Busy scenes of figures and horses in a pastel palette
- Mythical beast appliqué as handles and to neck bands

Sure to brighten any space, delivered ready for the home.

Search [London Fine for #18.5629](#), or scan the QR code for more photos and details

### DIMENSIONS

Max Width: 18cm (7")

Max Depth: 18cm (7")

Max Height: 33.5cm (13.25")

Max Width at the top: 15.5cm (6")

Base Diameter: 13cm (5")

