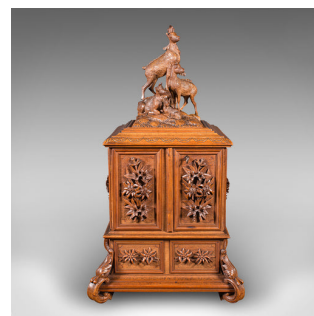


Antique Ornate Jewellery Box, German, Keepsake Casket, Black Forest, Victorian



DESCRIPTION

Our Stock # 24836

This is an antique ornate jewellery box. A German, Linden wood keepsake casket in Black Forest taste, dating to the late Victorian period, circa 1900.

<li class="p1">Striking Black Forest craftsmanship, exuding quality and charm

<li class="p1">Displays a desirable aged patina and in good order throughout

<li class="p1">Select Linden wood presents warm caramel hues

<li class="p1">Appealing Schwarzwalde motif adorns the superb casework

<li class="p1">Arranged as an enclosed case, with prominent doe and fawn surmount

<li class="p1">Each fascia hosts fascinating Edelweiss flowerheads in relief

<li class="p1">Pair of opening doors to the front and side fascia, with inset lock — key present

<li class="p1">Opening to reveal a delightful, diamond quilted silk cotton lining to each compartment

<li class="p1">Two trios of articulated ring boxes rotate outwards for viewing the contents

DIMENSIONS

Max Width: 32.5cm (12.75")

Max Depth: 32.5cm (12.75")

Max Height: 57.5cm (22.75")

Extended Width: 81.5cm (32")

Extended Depth: 53.5cm (21")

Extended Height: 56cm (22")



Search [London Fine for #24836](#) , or scan the QR code for more photos and details

+44 (0) 207 1833 511

London Fine Ltd
 The Antique Village
 The Old Whiteways Cider Factory
 Hele, Devon, EX5 4PW

sales@londonfine.co.uk
 E. & O. E.