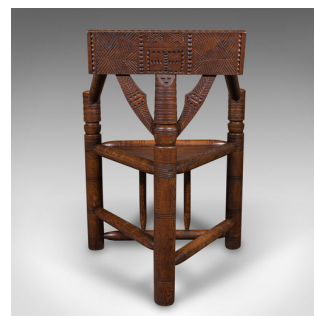


Antique Turner's Chair, English, Beech, Oak, Elbow Seat, Old Saxon, Victorian



DESCRIPTION

Our Stock # 24941

This is an antique turner's chair. An English, beech and oak elbow seat, dating to the late Victorian period, circa 1880.

- <li class="p1">Strikingly distinctive in the manner of the 'Old Saxon' chair
- <li class="p1">Displays a desirable aged patina and in good order
- <li class="p1">Quality beech and oak stocks present fine grain interest
- <li class="p1">Finished in appealing deep caramel beneath a wax polish finish

- <li class="p1">Superb form, with the triangular motif and impressively thick stocks
- <li class="p1">Engraved back rest, repeated upon the reverse
- <li class="p1">Bobbin turned arms meet pleasingly thick supports at a diameter of 2.75"
- <li class="p1">Legs united with turned stretchers and adjoined with a pair of front rails

This is a fascinating antique turner's chair, with a delightfully distinctive appearance that will enhance any room. Solid joints and construction, delivered ready for the home.

Search [London Fine for #24941](#) , or scan the QR code for more photos and details

DIMENSIONS

Max Width: 64.5cm (25.5")
 Max Depth: 56cm (22")
 Max Height: 86cm (33.75")
 Seat Width: 50cm (19.75")
 Seat Depth: 46cm (18")
 Seat Height: 44.5cm (17.5")

LIST PRICE

£1,495.00

