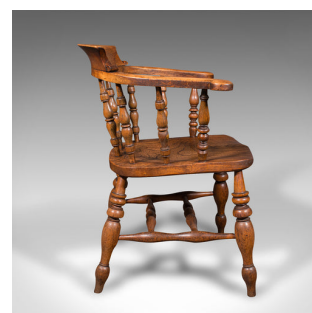


Antique Captain's Chair, English Elm, Beech, Smoker's Bow, Elbow Seat, Victorian



DESCRIPTION

Our Stock # 24947

This is an antique captain's chair. An English, elm and beech smoker's bow or elbow seat, dating to the mid Victorian period, circa 1860.

- <li class="p1">Superb country house appeal with the classic bow form
- <li class="p1">Displays a desirable aged patina and in good original order
- <li class="p1">Select elm and beech stocks show fine grain interest throughout
- <li class="p1">Graced with pleasingly light caramel hues to the delightful form

<li class="p1">The upper rail crowned with a prominent arched back rest for added comfort and support

<li class="p1">Ring turned spindles rise obliquely supporting the striking horseshoe armrest

<li class="p1">Each arm terminates in out-turned scrolled hand grips

<li class="p1">Standing upon a quartet of stout baluster legs united by a 'H' stretcher

This is a wonderful antique captain's chair, with appealing colour to the quality stocks and fine English craftsmanship. Solid joints and construction, delivered ready for the home

DIMENSIONS

Max Width: 62.5cm (24.5")

Max Depth: 58cm (22.75")

Max Height: 81.5cm (32")

Seat Width: 37.5cm (14.75")

Seat Depth: 45cm (17.75")

Seat Height: 45cm (17.75")

LIST PRICE

£895.00

