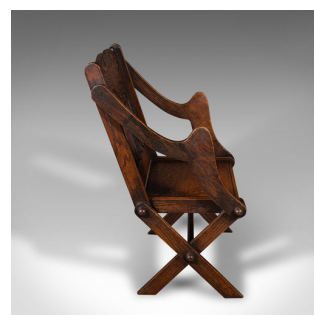


## Antique Glastonbury Chair, Welsh Oak, Gothic Revival Elbow Seat, Victorian, 1880



### DESCRIPTION

Our Stock # 24940

This is an antique Glastonbury chair. A Welsh, oak ecclesiastical elbow seat with Gothic overtones, dating to the late Victorian period, circa 1880.

- <li class="p3">A classic provincial example of the striking Glastonbury chair
- <li class="p3">Displays a desirable aged patina and good order throughout
- <li class="p3">Superb oak stocks show fine grain interest and deep caramel hues
- <li class="p3">Fascinating profile with bold arms and robust, domed peg joints

<li class="p3">Eye-catching seat back with a shaped and engraved top over a relief carved rest

<li class="p3">Displaying Gothic overtones, the carved panel presents arcading and diamond motif

<li class="p3">Distinctive arms with exaggerated form and terminating in prominent shaped knuckles

<li class="p3">Flat seat recessed gently inside the frame at a comfortable height of 42.5cm (16.75")

<li class="p3">Standing upon a quartet of dramatic stile legs, in eye-catching X-form

### DIMENSIONS

- Max Width: 66cm (26")
- Max Depth: 59.5cm (23.5")
- Max Height: 99cm (39")
- Seat Width: 56.5cm (22.25")
- Seat Depth: 39cm (15.25")
- Seat Height: 42.5cm (16.75")

### LIST PRICE

£985.00



Search [London Fine for #24940](#) , or scan the QR code for more photos and details

+44 (0) 207 1833 511

London Fine Ltd  
 The Antique Village  
 The Old Whiteways Cider Factory  
 Hele, Devon, EX5 4PW

sales@londonfine.co.uk  
 E. & O. E.