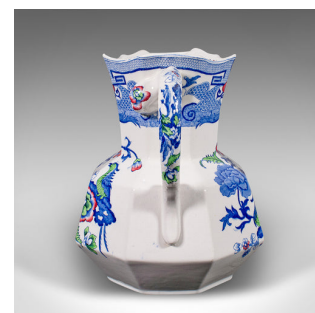


Large Antique Custard Pouring Jug, English, Ceramic Dessert Server, Victorian



**DESCRIPTION**

Our Stock # 24971

This is a large antique custard pouring jug. An English, ceramic dessert server, dating to the late Victorian period, circa 1900.

- <li class="p1">Colourful decoration accentuates this substantial pouring jug
- <li class="p1">Displays a desirable aged patina and in good order throughout
- <li class="p1">Generously sized and crafted from crisp white ceramic
- <li class="p1">Foliage decor with bird motif finished in bold blue, red and green hues
- <li class="p1">Mason's Ironstone mark to the base with the registered design number
- <li class="p1">The presence of the Lawley's of Regent Street mark indicates store exclusivity

This is a fascinating antique custard pouring jug, with a generously sized form and superb colour. Delivered ready for the home.

Search [London Fine for #24971](#) , or scan the QR code for more photos and details

**DIMENSIONS**

- Max Width: 23.5cm (9.25")
- Max Depth: 27cm (10.75")
- Max Height: 29.5cm (11.5")

**LIST PRICE**

£395.00

