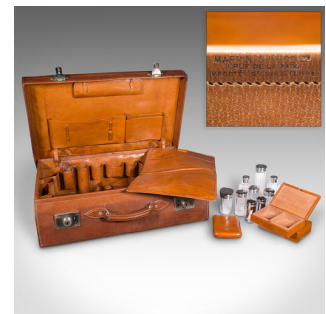


## Antique Gentleman's Valet Suitcase, English, Leather, Fitted Interior, C.1920



### DESCRIPTION

Our Stock # 24920

This is an antique Gentleman's valet suitcase. An English, leather fitted case with silver topped bottles, dating to the early 20th century, circa 1920.

<li class="p1">Superb fitted suitcase, replete with everything a travelling gent could need

<li class="p1">Displays a desirable aged patina and in good original order throughout

<li class="p1">Quality, supple leather displays a striking tan hue and in clean condition

<li class="p1">Supplied by Mappin & Webb from their Paris store on Rue de la Paix

<li class="p1">Lid held securely by a pair of sliding clasps, with inset locks – keys absent

<li class="p1">Broad, rolled leather carry strap feels tactile in the hand

<li class="p1">Upon opening, a delightful fitted interior awaits with a bounty of accessories

<li class="p1">Topped with silver, a set of seven glass bottles host lids with a distinctive emblem

<li class="p1">Hallmarked by the London assay office with date letter C for 1918

### DIMENSIONS

Max Width: 61.5cm (24.25")

Max Depth: 40cm (15.75")

Max Height: 18.5cm (7.25")

Interior Width: 46cm (18")

Interior Depth: 31cm (12.25")

Interior Height: 16.5cm (6.5")

### LIST PRICE

£1,495.00



Search [London Fine for #24920](#) , or scan the QR code for more photos and details

+44 (0) 207 1833 511

London Fine Ltd  
The Antique Village  
The Old Whiteways Cider Factory  
Hele, Devon, EX5 4PW

sales@londonfine.co.uk  
E. & O. E.