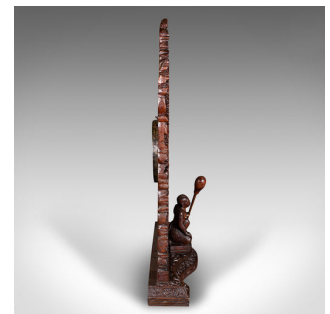


## Ornate Antique Temple Gong, Burmese, Carved, Mounted Chime, Victorian, C.1900



### DESCRIPTION

Our Stock # 24991

This is an ornate antique temple gong. A Burmese, carved teak mounted chime, dating to the late Victorian period, circa 1900.

- Exceptional Far Eastern decoration to this ornate gong
- Displays a desirable aged patina and in good order
- Teak crafted into a fine example of pierced fretwork
- Deep russet hues to the profuse vine motif, mask and dragon detailing
- Centrally mounted gong, suspended to the rear upon leather straps
- Hand beaten brass with a deep golden hue and a diameter of 19cm (7.5")
- Striker resides in the hand of a fascinating carved figure to the shaped base
- Presents a prominent, metallic tone when struck

This is a fascinating antique temple gong, with superb craftsmanship to the distinctive frame. Delivered ready to display or use.

Search [London Fine for #24991](#) , or scan the QR code for more photos and details

### DIMENSIONS

Max Width: 55.5cm (21.75")  
 Max Depth: 14cm (5.5")  
 Max Height: 76cm (30")  
 Striker Diameter: 3.5cm (1.5")  
 Striker Length: 24cm (9.5")  
 Gong Diameter: 19cm (7.5")

